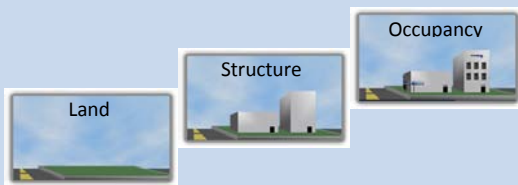


Edgesoft's Enterprise Land Management System (eLMS™) is a flexible, web-based solution that associates every piece of data with a specific location within the City. The system provides shared access to accurate, real-time information such as permits, cases, transactions or applications submitted by citizens.

eLMS™ streamlines the application and approval process and manages data with the following modules:

- ◆ Permits & Inspections
- ◆ Planning & Planner Update
- ◆ Code Enforcement
- ◆ Citizen Request Case Tracking
- ◆ Business License & Tax
- ◆ Fire
- ◆ Public Works

eLMS™ also provides access to other systems for Financials, Business Tax Data, Assessor Data, Historical Permit Data, etc.



Automate WorkFlow



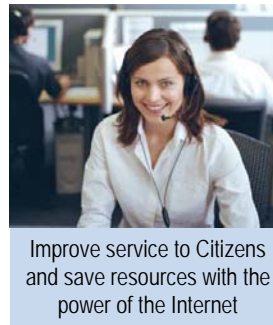
Save time managing and tracking projects by automatically generating work assignments

Department Integration



Increase Communication between all Development Departments

Online Services



Improve service to Citizens and save resources with the power of the Internet

Field Use

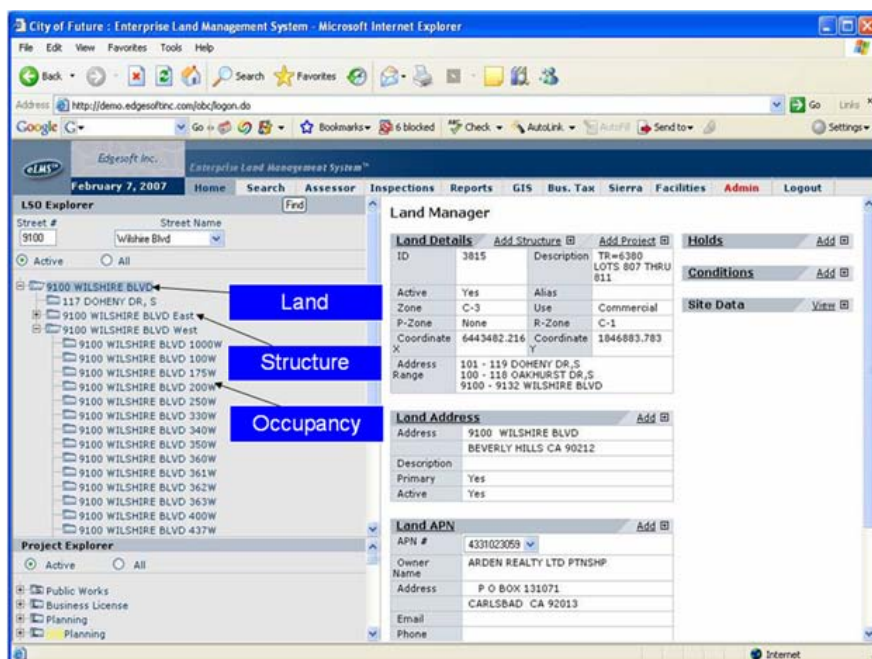


Improve efficiency by entering Inspection results at the jobsite when they occur

The Foundation of eLMS™ is the Land, Structure, Occupancy (LSO) Addressing Model:

- Land – Parcels**
- Structure – Buildings**
- Occupancy – Units**

By relating every piece of data to a specific City location according to address, structure and land use, the LSO Model provides an orderly structure for massive amounts of information.



eLMS™ provides a virtual “dashboard” view for all data concerning everything happening in the City at a given location at any given moment.

User-friendly technology enables eLMS™ to reduce training, maintenance, and system upgrades and creates extraordinary integration between departments.

eLMS™ is compatible with all major operating systems and database software.

“There is nothing I can think of that this solution cannot handle.” – Tom Sloan, Deputy Building Official, City of Burbank